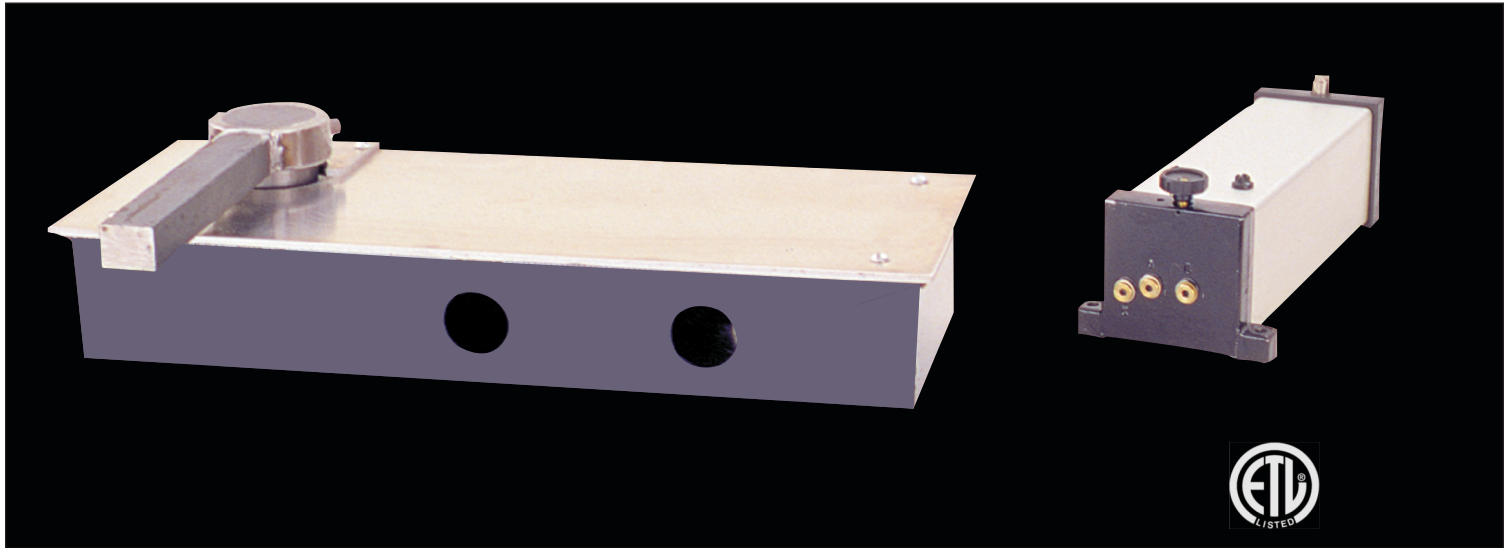




IN-GROUND 1100

Hydraulic Swing Gate Operator

SECURITY • SAFETY • RELIABILITY • ENDURANCE



The Byan Systems In-Ground 1100 Hydraulic Swing Gate Operators are designed to provide you with the best in security access while being virtually invisible. The 1100 Operator is ETL listed to UL 325 Standards. These operators are continuous duty and rated for commercial and residential use. There is no need to install physical stops since they are integrated into the design of the operator.



307.334.2865

Fax 307.334.2028

P.O. Box 1384 | 413 South Linden Street | Lusk, Wyoming 82225

www.byan.com

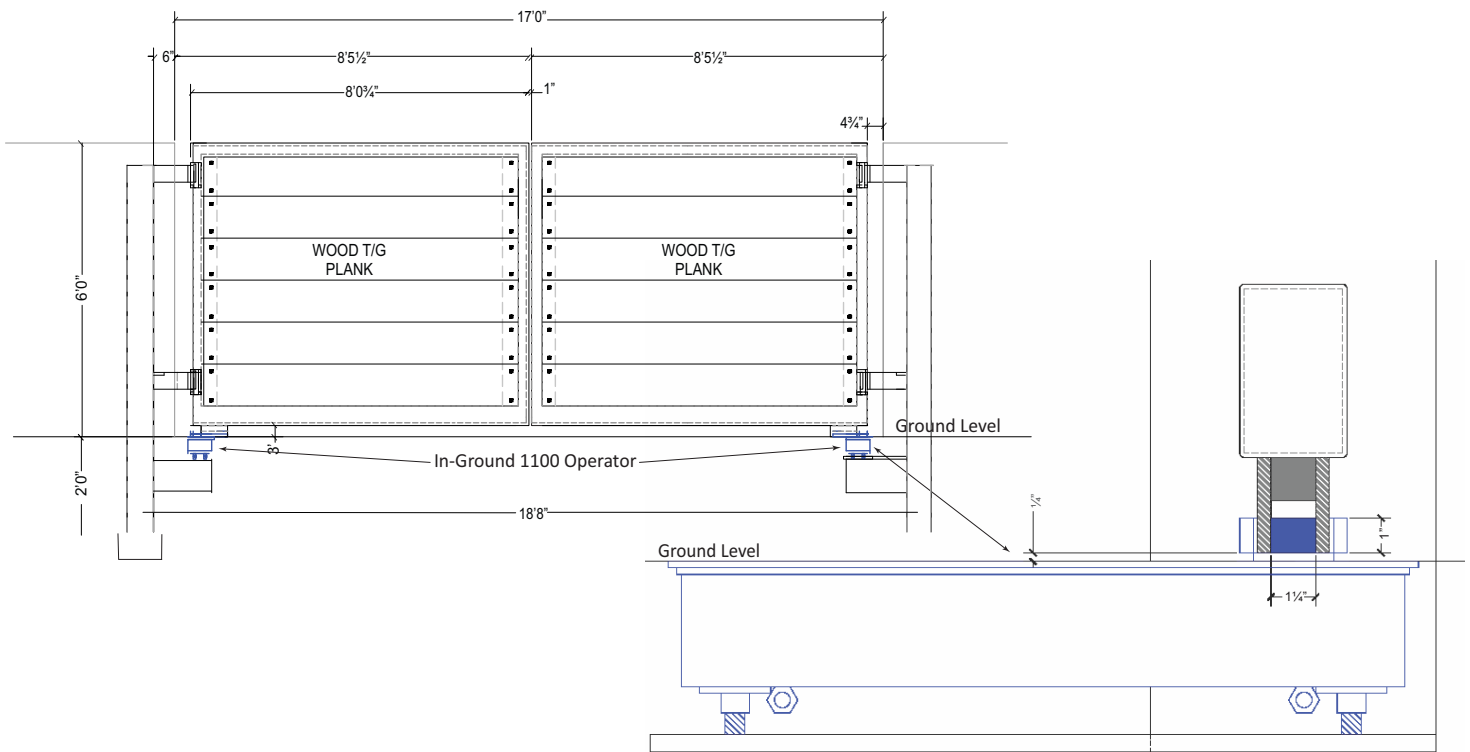
Toll Free 800.223.2926



SECURITY • SAFETY • RELIABILITY • ENDURANCE

SPECIFICATIONS: In-Ground 1100 Hydraulic Swing Gate Operator

- Drive Unit: 20½"L x 7¼"W x 3½"H
- Power Unit: 5⅞"W x 13"L x 4¼"H
- Pump: 1.0 Litre, 0.2 GMP
- Open Time: 12 Seconds
- Close Time: 13 Seconds
- Manual bypass for gate release during power outages
- Capable of handling a 16-foot Leaf 1,400 Pound Leaf 100° Opening
- Easily Repairable



When installed, the center of the pivot pin of the operator must be installed directly in line with the center of the gate hinge to prevent binding. A bottom hinge boot or sleeve must be constructed to connect the operator to the gate. The operator is **NOT** to be used as a bottom hinge. For the hydraulic system to operate correctly, it is recommended that the power pack be located no more that 12 feet from the operator.

307.334.2865

Fax 307.334.2028

P.O. Box 1384 | 413 South Linden Street | Lusk, Wyoming 82225

www.byan.com

Toll Free 800.223.2926

